

### Quality Outdoor Access

Early access to ample outdoor space with plentiful vegetation, shade, exercise areas, fresh air, and direct sunlight ensures the highest animal welfare.

### Commitment to the Organic Label

Brands that only produce organic products make the biggest investments — in time and money — in systems that benefit us all.

### Spacing

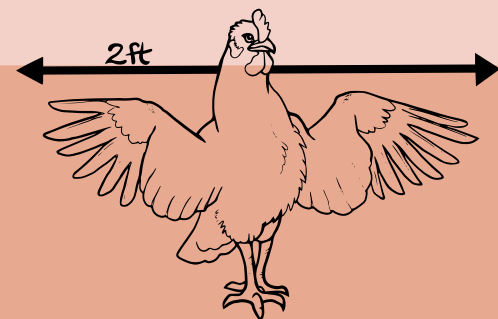
Adequate indoor and outdoor spacing reduces stress and disease. With less crowding, birds can stretch their wings and more easily perform other natural behaviors.

### Transparency

Cornucopia believes you have a right to transparency. Top brands share information with Cornucopia via a survey and cooperate with our own independent investigations.

### Flock Size

Smaller flock sizes (the number of laying hens per housing structure) offer better animal welfare conditions.



# Cracking Open Our Organic Egg Scorecard

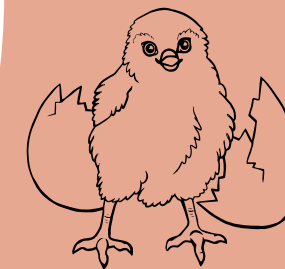
What it takes to reach the top

### Feed Sourcing

Ideally, organic feed is produced either on farm or from a regional or domestic organic grower.

### Alterations

Chickens use their beaks to interact with the world. Authentic organic farmers account for this behavior, eschewing beak trimming.



### Chicks

Raising chicks on farm or buying them from certified organic hatcheries shows dedication to organic production from start to finish.

### Hen Housing Type

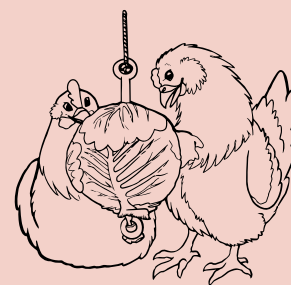
The best housing offers space for natural behaviors and legitimate access to the outdoors through adequate exits.

### Add on Labels

Additional certifications, depending on the credibility of the label, can demonstrate a commitment beyond the organic standards.

### Enrichments

Year-round access to perches, scratching areas, deep litter, novel foodstuffs (like cabbage!), and dust bathing contribute to quality of life.



### Environmental Impacts

Consistent soil and water monitoring and farming practices that support biodiversity and ecosystem benefits are hallmarks of ecologically based egg operations.